



# SPRINGWOOD GAWLER

**SIMONDS**  
BUILDING HOMES SINCE 1949

Kensington

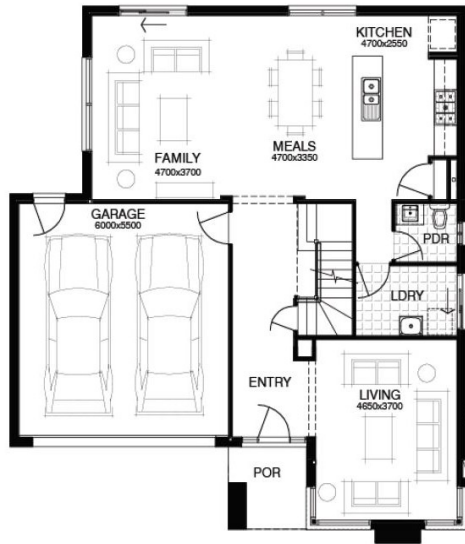


**\$502,885**

Lot 811 Burford Street | 448m<sup>2</sup>

- 4 bedrooms
- 2 bathrooms
- 3 living
- 2 garages

- Generous site & footing costs fixed before contract
- Developer & council requirements
- Render to facade, external lights
- Upgraded bricks, flat roof tiles
- Quality laundry & kitchen joinery
- Timber finish floating floor & carpet throughout
- LED downlights
- NBN ready
- Full stormwater system
- Ducted r/c heating & cooling



Springwood Discovery Centre | Easton Drive, Gawler East  
Monday, Wednesday, Saturday & Sunday | 12 noon - 5pm

1800 224 551 | [myspringwood.com.au](http://myspringwood.com.au)