



Lot 803 | 176m²
5.5m Frontage
32.0m Depth

\$338,200
Fixed Price!

3 Bedrooms
1.5 Bathrooms
1 Living
1 Garages

TURN KEY HOME WITH MILLION DOLLAR VIEWS

Springwood is proud to present to you The Parkview Collection. Stunningly designed turn-key townhouses overlooking Highfield Reserve, giving you million-dollar views of the sunset every night, right from the comfort of your bed.

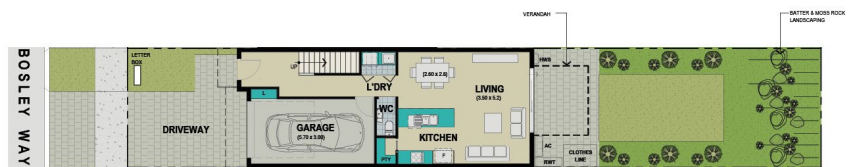
Lot 803 is designed with easy flow, and with entertaining in mind. The kitchen is located in the heart of the home, overlooking the living and dining meaning you are never far away from the action! The open plan living space opens up further onto the back garden which comes landscaped, meaning all the hard work is done for you!

Upstairs comprising of three bedrooms and the main bathroom. The spacious master bedroom with a large BIR opens onto your private balcony overlooking Highfield Reserve. Bedrooms 2 & 3 both feature BIRs.

With everything designed for you and turn-key ready, all you have to do is move in!



FIRST FLOOR PLAN



GROUND FLOOR PLAN

Springwood Discovery Centre | Easton Drive, Gawler East
Monday, Wednesday, Saturday & Sunday | 12 noon - 5pm

1800 224 551 | myspringwood.com.au



Award-winning Masterplanned Development in the Hills of Gawler*



- 2,000 New Homes with 74 hectares of open space connected by paths (you're never more than 200m from a park)
- NEW \$1M Reserve with over 9,000m² of kickabout space & nature play equipment
- Village Centre to be built in 2020 with Major Supermarket, retail shops, café, fuel, childcare and community centre
- Planning for primary school and major sporting oval
- Minutes from Gawler and the Barossa Valley Wine Region
- \$80M of infrastructure committed including Gawler East Link Road (due for completion mid 2020)
- Rail connectivity to city (express travel time 35min)

Springwood Discovery Centre | Easton Drive, Gawler East
Monday, Wednesday, Saturday & Sunday | 12 noon - 5pm

1800 224 551 | myspringwood.com.au